

LEAD JERA SCENA
NEOCHAIR ATHENA
FORMEN GALASSIA
SISTEMA CAST CIAK
PRIMA HELLO OSCAR
F01 F02 F03 F04
VEDETTE SUPEROTTO
PROVINO F01 BENCH
F03 BENCH REGIA
MOVIE JERA TREND
DOMUS SET DIVO
FLAGS



Tessuti

Fabrics

Tissus

	Poli	Eco-Pelle	Crepe	Stretch	Melange	Trevi	Lana	Crazy By Flukso	Chilli By Gabriel	Taylor F.R. By Flukso	Go Check By Gabriel	Crisp By Gabriel	Pelle	Rete Round	Rete Break	Rete Gabriel	Tecnopolimeri	Tecnopolimeri	Tecnopolimeri	Tecnopolimeri	Tecnopolimeri	Tecnopolimeri
Category	A	B	B	D	D	D	E	F	F	F	G	I	H	R1	R2	R3	T1	T2	T3	T4	T5	T6
<u>direzionali</u>																						
<i>executive</i>																						
<i>fauteuils de direction</i>																						
Lead		●					●	●	●	●	●	●	●									
Jera		●			●		●	●	●	●	●	●	●									
Scena		●			●	●	●	●	●	●	●	●	●									
NeoChair		●						●	●	●	●											
Athena			●		●	●		●	●	●			●									
Formen		●	●			●		●	●	●			●									
Galassia	●	●	●		●	●		●	●	●			●									
<u>operative</u>																						
<i>operative chairs</i>																						
<i>sièges de travail</i>																						
Sistema	●	●	●	●	●	●		●		●	●											
Sistema_Rete	●	●	●	●	●	●		●		●	●			●								
Cast	●	●	●	●	●	●		●	●	●	●	●										
Cast_Rete	●	●	●	●	●	●		●	●	●	●	●		●								
Ciak	●	●	●	●	●	●		●		●	●											
Ciak_Rete	●	●	●	●	●	●		●		●	●				●							
Prima	●	●	●	●	●	●		●	●	●	●	●										
Prima_Rete	●	●	●	●	●	●		●	●	●	●	●		●								
Hellò	●	●	●	●	●	●		●		●	●											
Hellò_Rete	●	●	●	●	●	●		●		●	●				●							
Oscar	●	●	●	●	●	●		●	●	●	●	●										
Oscar_Rete	●	●	●	●	●	●		●	●	●	●	●				●						
<u>multiuso</u>																						
<i>for all</i>																						
<i>polyvalent</i>																						
F01	●	●	●	●	●	●											●					
F02	●	●	●	●	●	●												●				
F03	●	●	●	●	●	●													●			
F04	●	●	●	●	●	●	●	●	●	●	●	●								●		
Vedette	●	●	●	●	●	●	●	●	●	●	●	●									●	
Superotto	●	●	●	●	●	●	●	●	●	●	●	●										
Provino	●	●	●	●	●	●																●
<u>attesa & riunione</u>																						
<i>waiting & meeting</i>																						
<i>attente & réunion</i>																						
F01 Bench	●	●	●	●	●	●											●					
F03 Bench	●	●	●	●	●	●													●			
Regia	●	●	●	●	●	●	●	●	●	●	●	●	●									
Movie	●	●	●	●	●	●	●	●	●	●	●	●	●									
<u>lounge</u>																						
Jera		●			●		●	●	●	●	●	●	●									
Trend	●	●	●		●	●	●	●	●	●	●	●	●									
Domus	●	●	●		●	●	●	●	●	●	●	●	●									
Set	●	●	●		●	●	●	●	●	●	●	●	●									
<u>smart office</u>																						
Divo				●	●	●	●		●	●	●	●										
Flags (panels)				●			●															
Flags (sofà)				●	●	●	●		●	●	●	●										

Cat. A

Poli

- 100% Polipropilene F.R.
- 250 gr/m² (peso)
- Martindale 50.000 cicli
- Ignifugo classe 1

- 100% Polypropylene F.R.
- 250 gr/m² (weight)
- Martindale 50.000 turns
- Fire-retardant class 1 (one)

- 100% Polypropylene F.R.
- 250 gr/m² (poids)
- Martindale 50.000
- Ignifuge classe 1



Cod. 475
Grigio
Grey
Gris



Cod. 478
Verde Chiaro
Light Green
Vert Clair



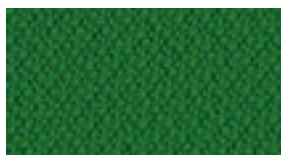
Cod. 482
Arancio
Orange
Orange



Cod. 476
Grigio Melange
Melange Grey
Gris Mélange



Cod. 480
Azzurro
Azure
Azur



Cod. 479
Verde
Green
Vert



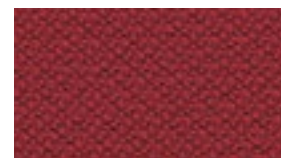
Cod. 481
Blu
Blue
Bleu



Cod. 483
Rosso
Red
Rouge



Cod. 477
Nero
Black
Noir



Cod. 484
Bordeaux
Bordeaux
Bordeaux

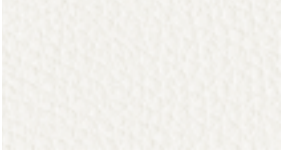
Cat. B

Eco-Pelle

- **Composizione fibrosa:**
65% Poliestere
35% Cotone
- **Composizione globale:**
85% PVC
10% Poliestere
5% Cotone
- 600 gr/m² (peso)
- Martindale 51.200 cicli
- Ignifugo classe 1

- **Fibrous composition:**
65% Polyester
35% Cotton
- **Global composition:**
85% PVC
10% Polyester
5% Cotton
- 600 gr/m² (weight)
- Martindale 51.200 turns
- Fire-retardant class 1 (one)

- **Composition fibreuse:**
65% Polyester
35% Coton
- **Composition globale:**
85% PVC
10% Polyester
5% Coton
- 600 gr/m² (poids)
- Martindale 51.200 cycles
- Ignifuge classe 1



Cod. 503
Bianco
White
Blanc



Cod. 515
Giallo
Yellow
Jaune



Cod. 507
Avorio
Ivory
Ivoire



Cod. 511
Verde Acido
Acid Green
Vert Acide



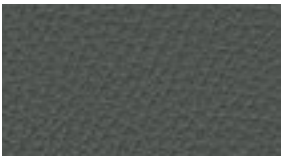
Cod. 504
Grigio
Grey
Gris



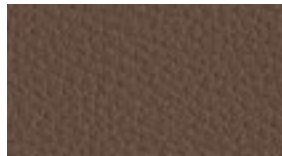
Cod. 508
Tabacco
Tobacco
Tabac



Cod. 513
Avio
Navy Blue
Bleu Aviateur



Cod. 505
Ardesia
Slate
Ardoise



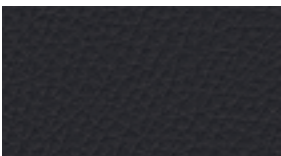
Cod. 509
Marrone
Brown
Marron



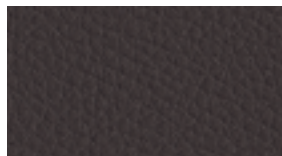
Cod. 512
Muschio
Moss Green
Vert Mousse



Cod. 516
Rosso
Red
Rouge



Cod. 506
Nero
Black
Noir



Cod. 510
Testa di Moro
Dark Brown
Marron Foncé



Cod. 514
Blu
Blue
Bleu



Cod. 517
Granata
Garnet
Grenat

Cat. B

Crepe

- 100% Poliestere
- FR-TREVIRA CS
- 330 gr/m² (peso)
- Martindale 100.000 cicli
- Ignifugo classe 1

- 100% Polyester
- FR-TREVIRA CS
- 330 gr/m² (weight)
- Martindale 100.000 turns
- Fire-retardant class 1 (one)

- 100% Polyester
- FR-TREVIRA CS
- 330 gr/m² (poids)
- Martindale 100.000 cycles
- Ignifuge classe 1



Cod. 522
Grigio Perla
Light Grey
Gris Clair



Cod. 534
Giallo
Yellow
Jaune



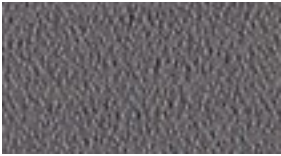
Cod. 525
Avorio
Ivory
Ivoire



Cod. 530
Artico
Arctic
Arctique



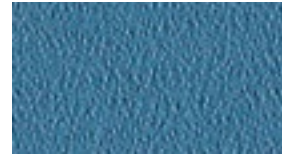
Cod. 535
Arancio
Orange
Orange



Cod. 523
Grigio Scuro
Dark Grey
Gris Foncé



Cod. 528
Verde Acido
Acid Green
Vert Acide



Cod. 531
Celeste
Light Blue
Bleu Clair



Cod. 536
Vinaccio
Wine Red
Rouge Vin



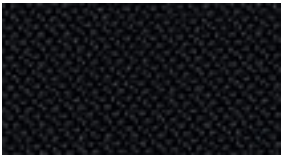
Cod. 526
Nocciola
Hazel
Noisette



Cod. 532
Cobalto
Cobalt
Cobalt



Cod. 537
Rosso
Red
Rouge



Cod. 524
Nero
Black
Noir



Cod. 527
Malto
Malt
Malt



Cod. 529
Petrolio
Petroleum
Huile



Cod. 533
Blu
Blue
Bleu



Cod. 538
Prugna
Plum
Prune

Cat. D

Stretch

- 100% Poliestere FR RICICLATO
- 340 gr/m² (peso)
- Martindale 50.000 cicli
- Ignifugo classe 1

- 100% Polyester FR RECYCLED
- 340 gr/m² (weight)
- Martindale 50.000 turns
- Fire-retardant class 1 (one)

- 100% Polyester FR RECYCLÉ
- 340 gr/m² (poids)
- Martindale 50.000 cycles
- Ignifuge classe 1



Cod. 595
Giallo Fresia
Fresia Yellow
Jaune Freesia



Cod. 585
Avorio
Ivory
Ivoire



Cod. 596
Arancio
Orange
Orange



Cod. 586
Grigio
Grey
Gris



Cod. 589
Tortora
Grey Beige
Gris Tourterelle



Cod. 591
Verde Acido
Acid Green
Vert Acide



Cod. 587
Antracite
Anthracite
Anthracite



Cod. 592
Verde Bosco
Wood Green
Vert Forêt



Cod. 593
Azzurro Sky
Sky Blue
Bleu Sky



Cod. 597
Rosso
Red
Rouge



Cod. 588
Nero
Black
Noir



Cod. 590
Marrone
Brown
Marron



Cod. 594
Blu
Blue
Bleu



Cod. 598
Amaranto
Amaranth
Amarante

Cat. D

Melange

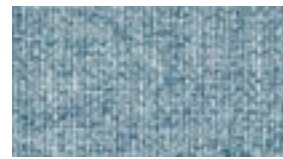
- 100% Poliestere
FR RICICLATO
- 340 gr/m² (peso)
- Martindale 50.000 cicli
- Ignifugo classe 1

- 100% Polyester
FR RECYCLED
- 340 gr/m² (weight)
- Martindale 50.000 turns
- Fire-retardant class 1
(one)

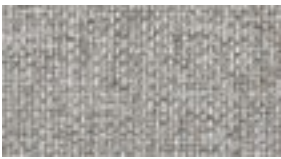
- 100% Polyester
FR RECYCLÉ
- 340 gr/m² (poids)
- Martindale 50.000 cycles
- Ignifuge classe 1



Cod. 603
Cenere
Ash
Cendre



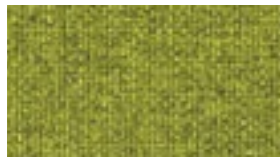
Cod. 611
Artico
Arctic
Arctique



Cod. 604
Grigio
Grey
Gris



Cod. 606
Tortora
Grey Beige
Gris Tourterelle



Cod. 608
Verde Acido
Acid Green
Vert Acide



Cod. 614
Petunia
Petunia
Pétunia



Cod. 605
Fumo
Smoke
Fumée



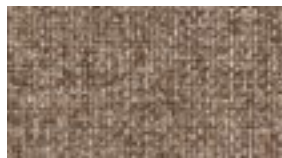
Cod. 609
Muschio
Moss Green
Vert Mousse



Cod. 612
Azzurro
Azure
Azur



Cod. 615
Ribes
Currant
Groseille



Cod. 607
Nocciola
Hazel
Noisette



Cod. 610
Verdone
Dark Green
Vert Foncé



Cod. 613
Cobalto
Cobalt
Cobalt



Cod. 616
Granata
Garnet
Grenat

Cat. D

Trevi

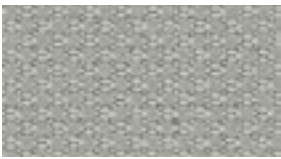
- 100% Poliestere
- FR TREVIRA CS
- 450 gr/m² (peso)
- Martindale 70.000 cicli
- Ignifugo classe 1

- 100% Polyester
- FR TREVIRA CS
- 450 gr/m² (weight)
- Martindale 70.000 turns
- Fire-retardant class 1 (one)

- 100% Polyester
- FR TREVIRA CS
- 450 gr/m² (poids)
- Martindale 70.000 cycles
- Ignifuge classe 1



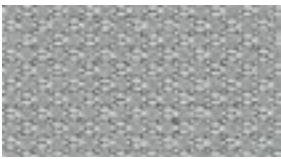
Cod. 633
Ocra
Ocher
Ocre



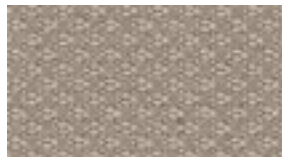
Cod. 621
Grigio
Grey
Gris



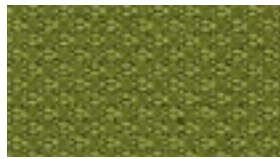
Cod. 634
Mattone
Brick Red
Rouge Brique



Cod. 622
Porfido
Porphyry
Porphyre



Cod. 625
Tortora
Grey Beige
Gris Tourterelle



Cod. 628
Verde Acido
Acid Green
Vert Acide



Cod. 630
Celeste
Light Blue
Bleu Clair



Cod. 635
Petunia
Petunia
Pétunia



Cod. 623
Grigio Scuro
Dark Grey
Gris Foncé



Cod. 626
Nocciola
Hazel
Noisette



Cod. 631
Pervinca
Periwinkle
Pervenche



Cod. 636
Rosso
Red
Rouge



Cod. 624
Nero
Black
Noir



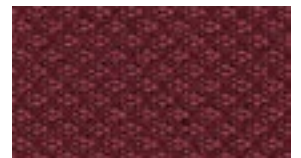
Cod. 627
Marrone
Brown
Marron



Cod. 629
Petrolio
Petroleum
Pétrole



Cod. 632
Blu
Blue
Bleu



Cod. 637
Amaranto
Amaranth
Amarante

Cat. E

Lana

•75% Lana/25% Poliammide
•335 gr/m² (peso)
•Martindale 100.000 cicli

•75% Wool/25% Polyamide
•335 gr/m² (weight)
•Martindale 100.000 turns

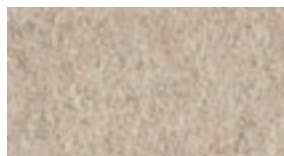
•75% Laine/25% Polyamide
•335 gr/m² (poids)
•Martindale 100.000 cycles



Cod. 649
Artico
Arctic
Arctique



Cod. 642
Grigio Chiaro
Light Grey
Gris Clair



Cod. 645
Tortora
Grey Beige
Gris Tourterelle



Cod. 650
Malibù
Malibu
Malibu



Cod. 653
Ruggine
Russet
Rouille



Cod. 643
Grigio Scuro
Dark Grey
Gris Foncé



Cod. 647
Verde Acido
Acid Green
Vert Acide



Cod. 651
Pervinca
Periwinkle
Pervenche



Cod. 654
Mattone
Brick Red
Rouge Brique



Cod. 646
Marrone
Brown
Marron



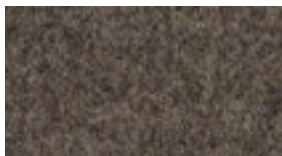
Cod. 648
Muschio
Moss Green
Vert Mousse



Cod. 652
Avio
Navy Blue
Bleu Aviateur



Cod. 655
Fuoco
Fire Red
Rouge Feu



Cod. 644
Fumo
Smoke
Fumée

Cat. E
Crazy by
Flukso

•80% PVC/18% Poliestere/
2% Fibra poliuretanică
•600 gr/m² (peso)
•Martindale 50.000 cicli
•Ignifugo classe 1

•80% PVC/18% Poliestere/
2% Fibra poliuretanică
•600 gr/m² (weight)
•Martindale 50.000 turns
•Fire-retardant class 1
(one)

•80% PVC/18% Polyester/
2% Fibres de polyuréthane
•600 gr/m² (poids)
•Martindale 50.000 cycles
•Ignifuge classe 1



Cod. 660
Bianco
White
Blanc



Cod. 661
Grigio
Grey
Gris



Cod. 663
Beige
Beige
Beige



Cod. 665
Oliva
Olive
Olive



Cod. 664
Tabacco
Tobacco
Tabac



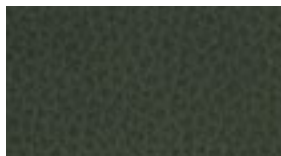
Cod. 667
Navy
Navy Blue
Bleu Aviateur



Cod. 669
Rosso
Red
Rouge



Cod. 662
Grafite
Graphite
Graphite



Cod. 666
Alga
Seaweed
Algue



Cod. 668
Blu
Blue
Bleu



Cod. 670
Vinaccio
Wine Red
Rouge Vin

Cat. E
Chili by
Gabriel

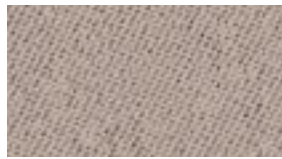
- 75% Poliestere riciclato post-consumo FR/ 25% Poliestere FR (FR all'interno della fibra)
- 335 gr/m² (peso)
- Martindale 60.000 cicli
- Ignifugo classe 1

- 75% Post-consumer recycled Polyester FR/ 25% Polyester FR (FR inside the fiber)
- 335 gr/m² (weight)
- Martindale 60.000 turns
- Fire-retardant class 1 (one)

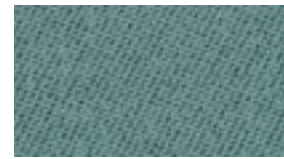
- 75% polyester recyclé post-consommation FR/ 25% polyester FR (FR à l'intérieur de la fibre)
- 335 gr/m² (poids)
- Martindale 60.000 cycles
- Ignifuge classe 1



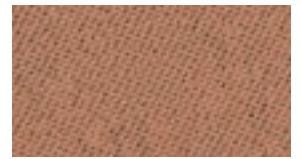
Cod. 683
 Senape
 Mustard
 Moutarde



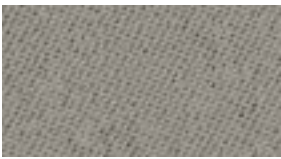
Cod. 677
 Avorio Polvere
 Powder Ivory
 Ivoire Poudre



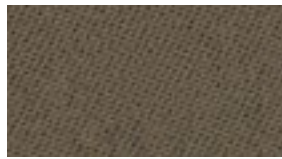
Cod. 681
 Acquamarina
 Acquamarine
 Aigue-Marine



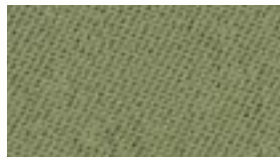
Cod. 684
 Cipria
 Powder Pink
 Rose Poudre



Cod. 675
 Grigio Chiaro
 Light Grey
 Gris Clair



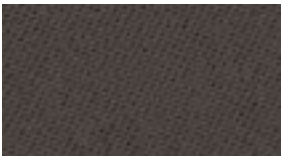
Cod. 678
 Tortora
 Grey Beige
 Gris Tourterelle



Cod. 679
 Salvia
 Sage
 Saug



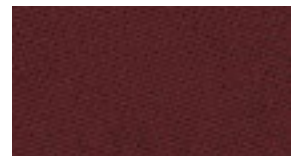
Cod. 682
 Avio
 Navy Blue
 Bleu Aviateur



Cod. 676
 Antracite
 Anthracite
 Anthracite



Cod. 680
 Fieno
 Hay
 Foin



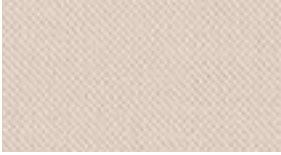
Cod. 685
 Vinaccio
 Wine Red
 Rouge Vin

Cat. F
Taylor F.R.
by Flukso

- 100% Poliestere
- 330 gr/m² (peso)
- Martindale 60.000 cicli
- Ignifugo classe 1

- 100% Polyester
- 330 gr/m² (weight)
- Martindale 60.000 turns
- Fire-retardant class 1 (one)

- 100% Polyester
- 330 gr/m² (poids)
- Martindale 60.000 cycles
- Ignifuge classe 1



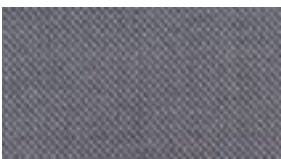
Cod. 689
 Marna
 Marl
 Marne



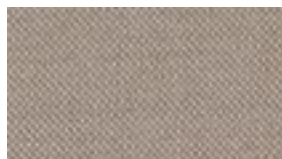
Cod. 699
 Ocra
 Ocher
 Ocre



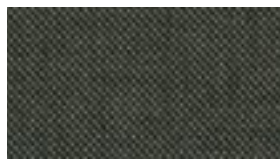
Cod. 700
 Mattone
 Brick Red
 Rouge Brique



Cod. 690
 Grigio Scuro
 Dark Grey
 Gris Foncé



Cod. 693
 Tortora
 Grey Beige
 Gris Tourterelle



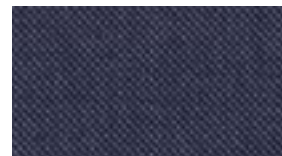
Cod. 695
 Oliva
 Olive
 Olive



Cod. 701
 Prugna
 Plum
 Prune



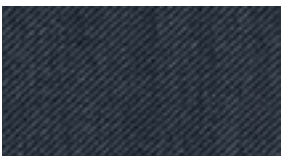
Cod. 691
 Grafite
 Graphite
 Graphite



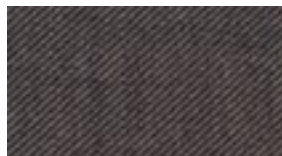
Cod. 697
 Avio
 Navy Blue
 Bleu Aviateur



Cod. 702
 Rosso
 Red
 Rouge



Cod. 692
 Nero
 Black
 Noir



Cod. 694
 Tabacco
 Tobacco
 Tabac



Cod. 696
 Petrolio
 Petroleum
 Pétrole



Cod. 698
 Blu Notte
 Night Blue
 Bleu Nuit



Cod. 703
 Vinaccio
 Wine Red
 Rouge Vin

Cat. G

Go Check by Gabriel

- 100% Trevira CS
- 310 gr/m² (peso)
- Martindale 80.000 cicli
- Ignifugo classe 1

- 100% Trevira CS
- 310 gr/m² (weight)
- Martindale 80.000 turns
- Fire-retardant class 1 (one)

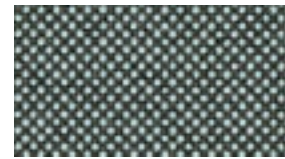
- 100% Trevira CS
- 310 gr/m² (poids)
- Martindale 80.000 cycles
- Ignifuge classe 1



Cod. 748
Giallo
Yellow
Jaune



Cod. 738
Beige
Beige
Beige



Cod. 744
Azzurro
Azure
Azur



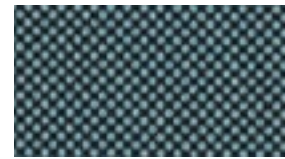
Cod. 749
Arancio
Orange
Orange



Cod. 739
Fango
Mud
Boue



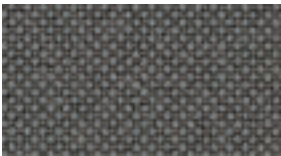
Cod. 741
Verde
Green
Vert



Cod. 745
Turchese
Turquoise
Turquoise



Cod. 750
Pesca
Peach
Pêche



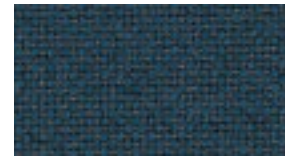
Cod. 736
Grigio
Grey
Gris



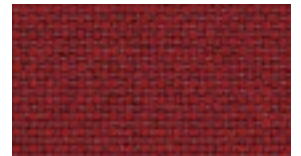
Cod. 740
Cacao
Cocoa
Cacao



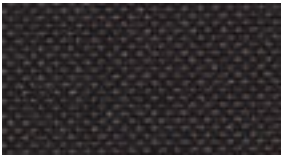
Cod. 742
Prato
Lawn
Pelouse



Cod. 746
Mare
Sea
Mer



Cod. 751
Rosso
Red
Rouge



Cod. 737
Nero
Black
Noir



Cod. 743
Bottiglia
Bottle
Bouteille



Cod. 747
Blu
Blue
Bleu



Cod. 752
Amaranto
Amaranth
Amarante

Cat. I
Crisp by
Gabriel

- 93% Lana Nuova Zelanda/7% Poliammide
- 328 gr/m² (peso)
- Martindale 200.000 cicli
- Ignifugo classe 1

- 93% New Zealand Wool/7% Polyamide
- 328 gr/m² (weight)
- Martindale 200.000 turns
- Fire-retardant class 1 (one)

- 93% Laine de Nouvelle Zélande/7% Polyamide
- 328 gr/m² (poids)
- Martindale 200.000 cycles
- Ignifuge classe 1



Cod. 843
 Avorio Polvere
 Powder Ivory
 Ivoire Poudre



Cod. 849
 Senape
 Mustard
 Moutarde



Cod. 845
 Limo
 Silt Green
 Vert Bave



Cod. 847
 Acquamarina
 Aquamarine
 Aigue-Marine



Cod. 841
 Grigio Chiaro
 Light Grey
 Gris Clair



Cod. 846
 Salvia
 Sage
 Saugé



Cod. 850
 Cipria
 Powder Pink
 Rose Poudre



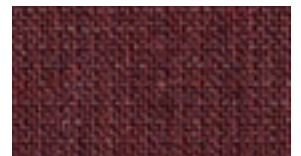
Cod. 842
 Antracite
 Anthracite
 Anthracite



Cod. 844
 Tortora
 Grey Beige
 Gris Tourterelle



Cod. 848
 Avio
 Navy Blue
 Bleu Aviateur



Cod. 851
 Vinaccio
 Wine Red
 Rouge Vin

Cat. H

Pelle

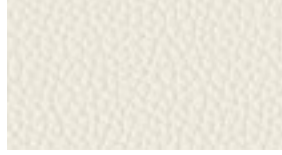
•100% pelle bovina, smerigliata e stampata. Spessore 0,8-1,0 mm.
Eventuali imperfezioni, graffi e cicatrici presenti nella pelle non devono essere considerati difetti, ma pregi e caratteristiche di garanzia e autenticità della vera pelle

•100% cowhide, sanded and printed. Thickness 0.8 - 1.0 mm.
Possible leather scratches and marks are not to be considered imperfections but a guarantee of its quality and authenticity

•100% cuire de bovins, poncé et imprimé. Épaisseur: 0,8-1,0 mm.
Les éventuelles imperfections, égratignures ou cicatrices présentes dans le cuir ne sont pas des défauts, mais des marques naturelles, une garantie de l'authenticité du vraicuir



Cod. 773
Bianco
White
Blanc



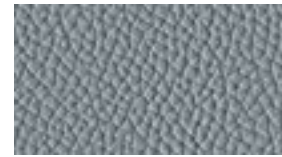
Cod. 777
Latte
Milk
Lait



Cod. 787
Ananas
Pineapple
Ananas



Cod. 774
Acqua
Water
Eau



Cod. 784
Piombo
Lead
Plomb



Cod. 788
Arancio
Orange
Orange



Cod. 778
Pietra
Stone
Pierre



Cod. 781
Lime
Lime
Lime



Cod. 775
Ardesia
Slate
Ardoise



Cod. 779
Fango
Mud
Boue



Cod. 782
Muschio
Moss Green
Vert Mousse



Cod. 785
Blu Notte
Night Blue
Bleu Nuit



Cod. 789
Rosso
Red
Rouge



Cod. 776
Nero
Black
Noir



Cod. 780
Testa di Moro
Dark Brown
Marron Foncé



Cod. 783
Verdone
Dark Green
Vert Foncé



Cod. 786
Oceano
Ocean
Océan



Cod. 790
Granata
Garnet
Grenet

Cat. R1

Rete round

•100% Poliestere
•510 gr/m² (peso)
•Martindale 60.000 cicli

•100% Polyester
•510 gr/m² (weight)
•Martindale 60.000 turns

•100% Polyester
•510 gr/m² (poids)
•Martindale 60.000 cycles



Cod. 301
Bianco
White
Blanc



Cod. 308
Verde
Green
Vert



Cod. 305
Blu
Blue
Bleu



Cod. 306
Arancio
Orange
Orange



Cod. 302
Grigio
Grey
Gris



Cod. 307
Rosso
Red
Rouge



Cod. 303
Nero
Black
Noir

- solo per schienale
for backrest only
seulement pour
dossier
SISTEMA RETE
CAST RETE
PRIMA RETE
F03 RETE

Cat. R2

Rete break

•70% PVC/ 30% Poliestere
•560 gr/m² (peso)
•Martindale 100.000 cicli

•70% PVC/ 30% Polyester
•560 gr/m² (weight)
•Martindale 100.000 turns

•70% PVC/ 30% Polyester
•560 gr/m² (poids)
•Martindale 100.000 cycles

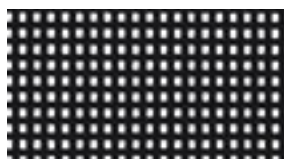


Cod.310
Bianco
White
Blanc



Cod.311
Verde
Green
Vert

- solo per schienale
for backrest only
seulement pour dossier
HELLO RETE
CIAK RETE



Cod.312
Nero
Black
Noir

Cat. R3

Rete Gabriel

- 100% Poliestere
- 328 gr/m² (peso)
- Martindale 70.000 cicli
- Ignifugo classe 1

- 100% Polyester
- 328 gr/m² (weight)
- Martindale 70.000 turns
- Fire-retardant class 1 (one)

- 100% Polyester
- 328 gr/m² (poids)
- Martindale 70.000 cycles
- Ignifuge classe 1



Cod. 757
Bianco
White
Blanc



Cod. 763
Verde
Green
Vert



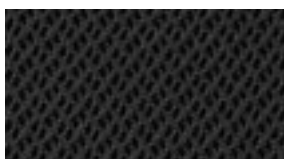
Cod. 765
Turchese
Turquoise
Turquoise



Cod. 768
Rosso
Red
Rouge



Cod. 758
Acciaio
Steel
Acier



Cod. 759
Nero
Black
Noir

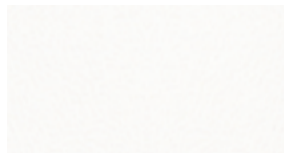
- solo per schienale
for backrest only
seulement pour dossier
OSCAR RETE

TEC. T1 **Mod. F01**

•100% Polipropilene

•100% Polypropylene

•100% Polypropylene



Cod.912 (RAL 9003)
Bianco
White
Blanc



Cod.940 (PANTONE 7495EC)
Verde
Green
Vert



Cod.913 (RAL 3000)
Rosso
Red
Rouge



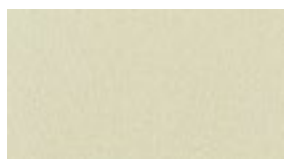
Cod.950
Nero
Black
Noir

TEC. T2 **Mod. F02**

•100% Polipropilene

•100% Polypropylene

•100% Polypropylene



Cod.916 (RAL 1013)
Avorio
Ivory
Ivoire



Cod.917 (RAL7003)
Tortora
Grey Beige
Gris Tourterelle



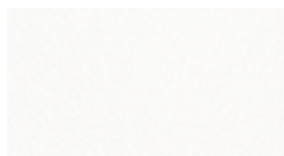
Cod.918 (RAL 1012)
Giallo
Yellow
Jaune

TEC. T3 **Mod. F03**

•100% Polipropilene

•100% Polypropylene

•100% Polypropylene



Cod.912 (RAL 9003)
Bianco
White
Blanc



Cod.950
Nero
Black
Noir

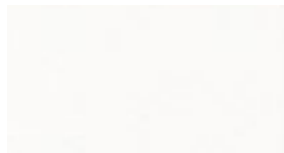
TEC. T4

Mod. F04

•100% Polipropilene

•100% Polypropylene

•100% Polyprobylene



Cod. 911
Bianco
White
Blanc



Cod. 915
Petrolio
Petroleum
Pétrole



Cod. 919
Arancio
Orange
Orange



Cod. 950
Nero
Black
Noir

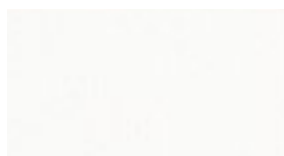
TEC. T5

Mod. Vedette

•100% Polipropilene

•100% Polypropylene

•100% Polyprobylene



Cod. 909
Bianco
White
Blanc



Cod. 941
Verde
Green
Vert



Cod. 955
Antracite
Anthracite
Anthracite



Cod. 960
Cipria
Powder Pink
Rose Poudre

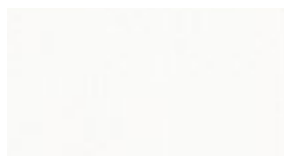
TEC. T6

Mod. Provino

•100% Polipropilene

•100% Polypropylene

•100% Polyprobylene



Cod. 909
Bianco
White
Blanc



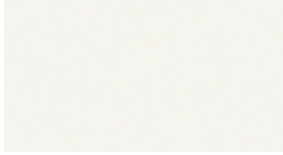
Cod. 914
Rosso
Red
Rouge



Cod. 950
Nero
Black
Noir

Legni
Wood
Bois

△ 3D Foil



Cod. 68
Bianco
White
Blanc

△



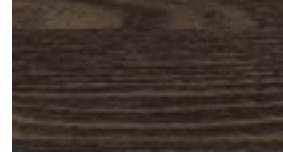
Cod. 56
Nero
Black
Noir

△



Cod. 12
Olmo Grey
Grey Elm
Orme Grey

△



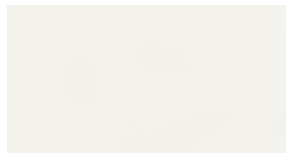
Cod. 52
Frassino Brown
Brown Ash
Frêne Brown

△

Metallo

Metal

Métal



Cod.BI 02
Bianco
White
Blanc



Cod.AR 02
Argento
Silver
Argent



Cod.SG 01
Stone Grey
Stone Grey
Stone Grey



Cod.AN 02
Antracite
Anthracite
Anthracite



Cod.NR 03
Nero Opaco
Matt Black
Noir Mat



Las Mobili s.r.l

Via dell'Industria, n 81/ 64018 Tortoreto (TE) - Italy
T. +39. 0861 7831/ F. +39. 0861 786851

las@las.it - www.las.it